

TWINS 290 g/m²

Material: inside 100% cotton
outside 100% PES
microfiber

Size: XS, S, M, L, XL, XXL

Packaging: 8 - 10 pcs

Box size: 40x40x60 cm / Box weight: 12 kg

IN STOCK



Luxurious bathrobes with a scarf collar and a distinctive hem on the collar and sleeve edges are made of velvety soft polyester fibers on the outside. The inner side is made of high-quality cotton material. Combination of white and gray colors, fashion belt and stylish pockets stand out for this product.

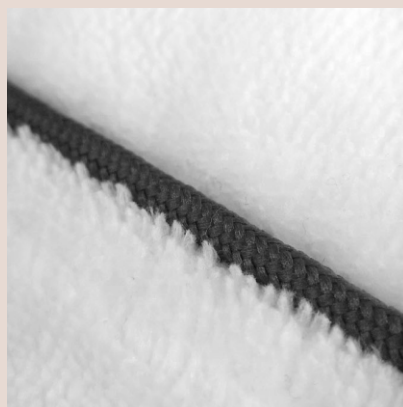
2 colors



white
Pantone
Trans. white



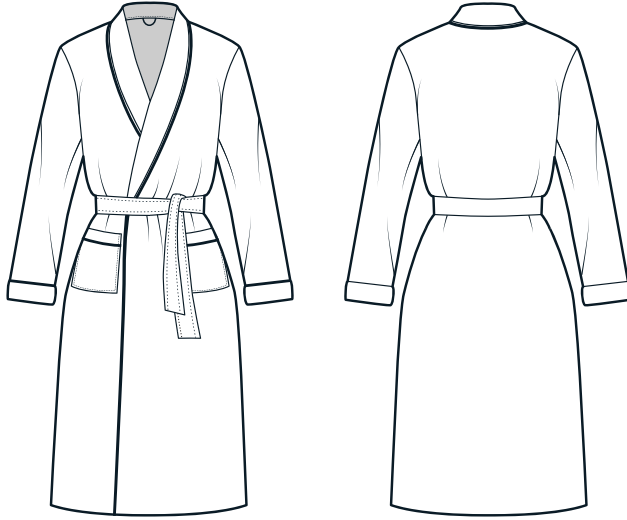
graphite
Pantone
7540 C



Certificates



Size



	XS	S	M	L	XL	XXL
Back length	115	120	120	125	130	130
chest width	52	55	59	63	66	70
sleeve and shoulder length	73	75	78	81	83	86
neck width	22	23	24	25	26	27
armhole	22	23	24	26	28	30
cuff width	16	17	18	19	20	21
cuff height	8	8	8	10	10	10
pocket width	18	18	18	18	18	18
pocket height	21	21	21	21	21	21
Pocket hem width	4	4	4	4	4	4
tape width	4	4	4	4	4	4
tape length	215	215	215	225	225	225
bathrobe circumference	128	136	144	152	160	168

■ in stock

Branding

- Embroidery
- Label



Packaging

- Organza satchet
- Gift boxes
- Paper cover
- PE bag

**I'm Frotery,
towel
with your
story**

FROTERY® towels, bath towels and bathrobes are a guarantee of material quality, functionality and original design that you can participate in. FROTERY® offers high-weight products that make towels and bath towels exceptionally absorbent and soft to the touch.